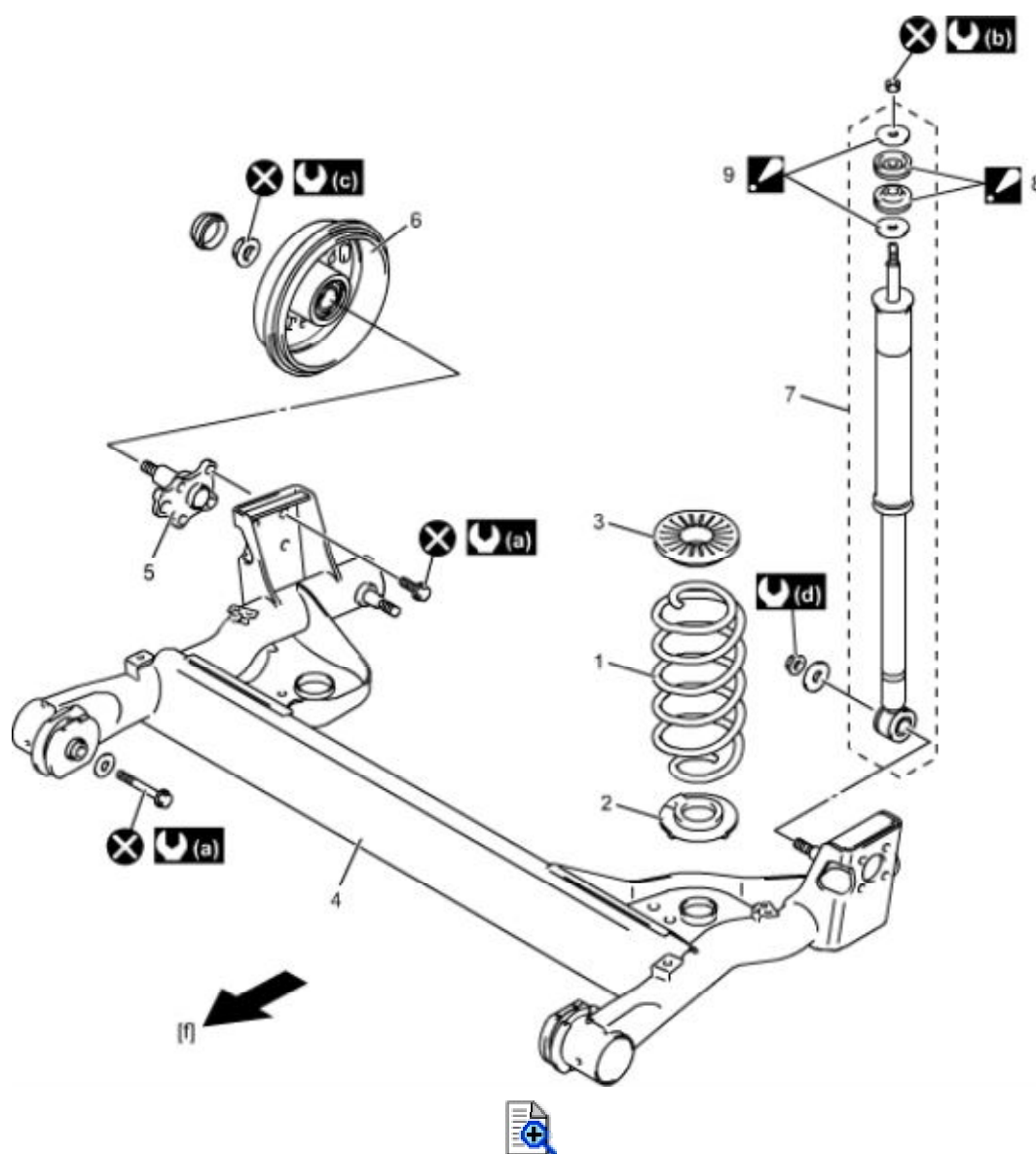


Rear Suspension Components



1. Rear coil spring	6. Brake drum	28 N·m (2.9 kgf-m, 21.0 lbf-ft)
2. Rear spring lower seat	7. Rear shock absorber	175 N·m (17.8 kgf-m, 129.5 lbf-ft)
3. Rear spring upper seat	8. Shock absorber upper bush : For correct installing direction of shock absorber upper bushes.	90 N·m (9.2 kgf-m, 66.5 lbf-ft)
4. Trailing arm	9. Shock absorber upper washer : For correct installing direction of shock absorber upper washers.	: Do not reuse.
5. Spindle	75 N·m (7.6 kgf-m, 55.5 lbf-ft)	[f]: Forward

