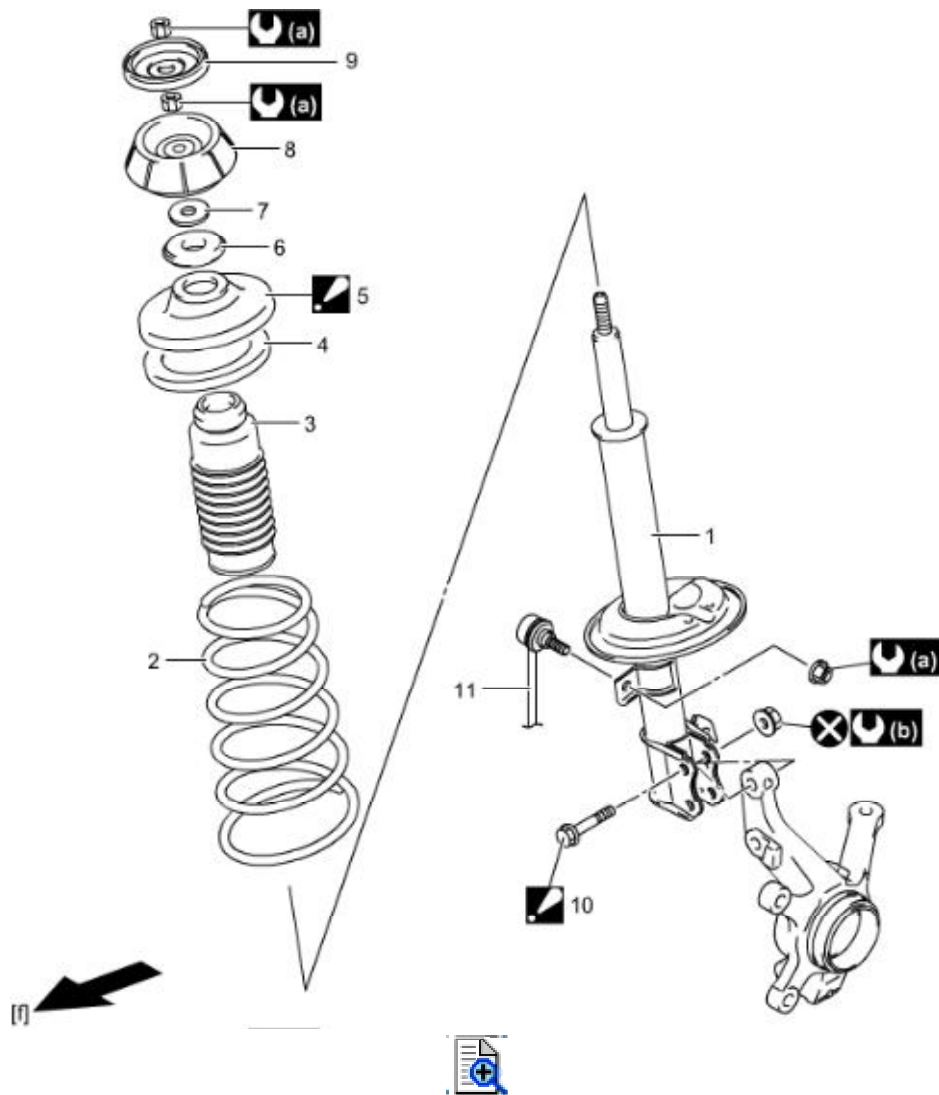


Front Strut Assembly Components



1. Front strut	6. Strut bearing	11. Stabilizer joint
2. Coil spring	7. Strut bearing plate	(a): 50 N·m (5.1 kgf-m, 37.0 lbf-ft)
3. Strut dust cover	8. Strut support	(b): 90 N·m (9.2 kgf-m, 66.5 lbf-ft)
4. Coil spring seat	9. Rebound stopper	: Do not reuse.
5. Coil spring upper seat : Align "out" mark on coil spring upper seat and center of strut bracket.	10. Strut bracket bolt : Insert from vehicle front side.	[f]: Forward