

Engine Electrical Devices

Repair Instructions

Idle Air Control (IAC) Valve Removal and Installation

S3RH0A1306003

Removal

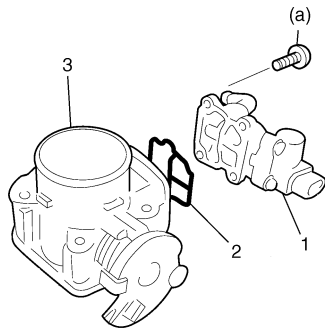
- 1) Remove throttle body from intake manifold referring to "Throttle Body Removal and Installation: in Section 1D".
- 2) Remove IAC valve from throttle body.

Installation

- 1) Install new gasket (2) to IAC valve (1).
- 2) Install IAC valve (1) to throttle body (3).
Tighten IAC valve screws to specified torque.

Tightening torque

IAC valve screw (a): 3.5 N·m (0.35 kg-m, 2.5 lb-ft)



I2RH0B130001

- 3) Install throttle body to intake manifold referring to "Throttle Body Removal and Installation: in Section 1D".

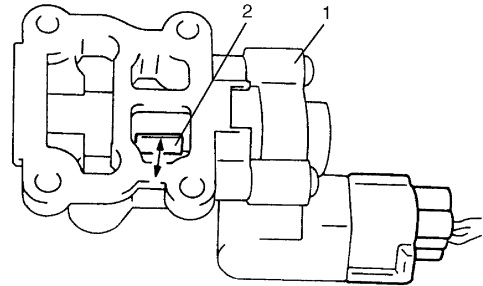
Idle Air Control (IAC) Valve Inspection

S3RH0A1306004

- 1) Connect each connector to IAC valve (1), TP sensor and IAT sensor.
- 2) Check that rotary valve (2) of IAC valve opens and closes once and then stops in about 60 ms as soon as ignition switch is turned ON.

NOTE:

- This check should be performed by two people, one person turns ignition switch ON while the other checks valve operation.
- As valve operation is momentary, it may be overlooked. To prevent this, perform this operation check 3 times or more continuously.
If rotary valve of IAC valve does not operate at all, check wire harness for open and short. If wire harness is in good condition, replace IAC valve and recheck.



I2RH0B130002

Engine Control Module (ECM) Removal and Installation

S3RH0A1306005

CAUTION:

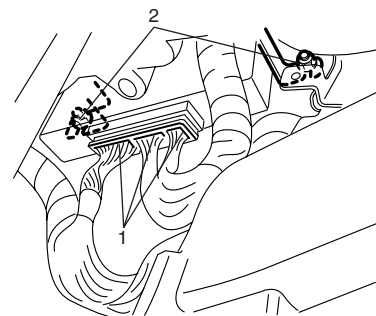
As ECM consists of precision parts, be careful not to expose it to excessive shock.

Removal

- 1) Disconnect battery negative cable at battery.
- 2) Disable air bag system, refer to "Disabling Air Bag System: in Section 8B".
- 3) Remove glove box, referring to Step 5) of "Removal" under "Instrument Panel Removal and Installation: in Section 9C".
- 4) Disconnect connectors (1) from ECM while releasing connectors lock.
- 5) Remove ECM from body after removing its nuts (2).

NOTE:

Be careful not to damage ventilation duct.



I2RH0B130004

Installation

Reverse removal procedure noting the following:

- Connect connectors to ECM securely until a click is heard.
- When installing each part, be careful not to catch any cable or wiring harness.